

GrAins

Greening Agrifood
in Social Economy



Co-funded by
the European Union



Clusters of Social and Ecological Innovation (CSEIs)

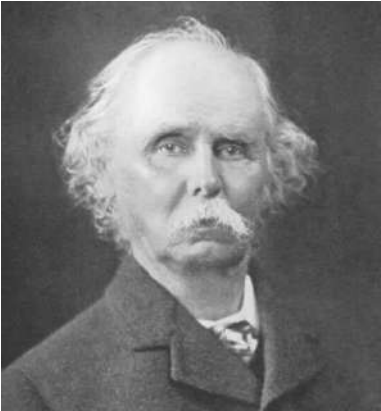
Capacity Building 3 - Diosis Network
Francesco De Rosa
27 June 2024



Co-funded by
the European Union

CLUSTER and CSEI

General Definition: a group of similar things that are close together, sometimes surrounding something.



Alfred Marshall 1842 – 1924

Clusters: industrial districts
"concentration of specialised industries in particular localities"



Michael E. Porter 1947

Clusters:
"Geographic concentrations of interconnected companies and institutions in a particular field"

"concentration of specialized industries in particular localities"

"Clusters are defined as groups of firms, related economic actors, and institutions that are located near each other and have reached a sufficient scale to develop specialised expertise, services, resources, suppliers and skills"

Clusters of Social and Ecological Innovation (CSEI) group mainly of social economy entities with mainstream enterprises, civil society organisations, public authorities, education and research institutions that cooperate in a particular location to improve local economic, ecological and societal prosperity and regeneration by facilitating cooperation, pooling of resources and enhancing innovation capacity.



CSEI provide prosperity in territories in numerous sectors, help build resilient local value chains and serve a broad range of stakeholders.

Their main strength is their know-how and their capacity to cooperate, stemming from the values of the social economy and their capacity to experiment and innovate boosting different types of innovations:

- Economic
- Social
- Ecological
- Governance

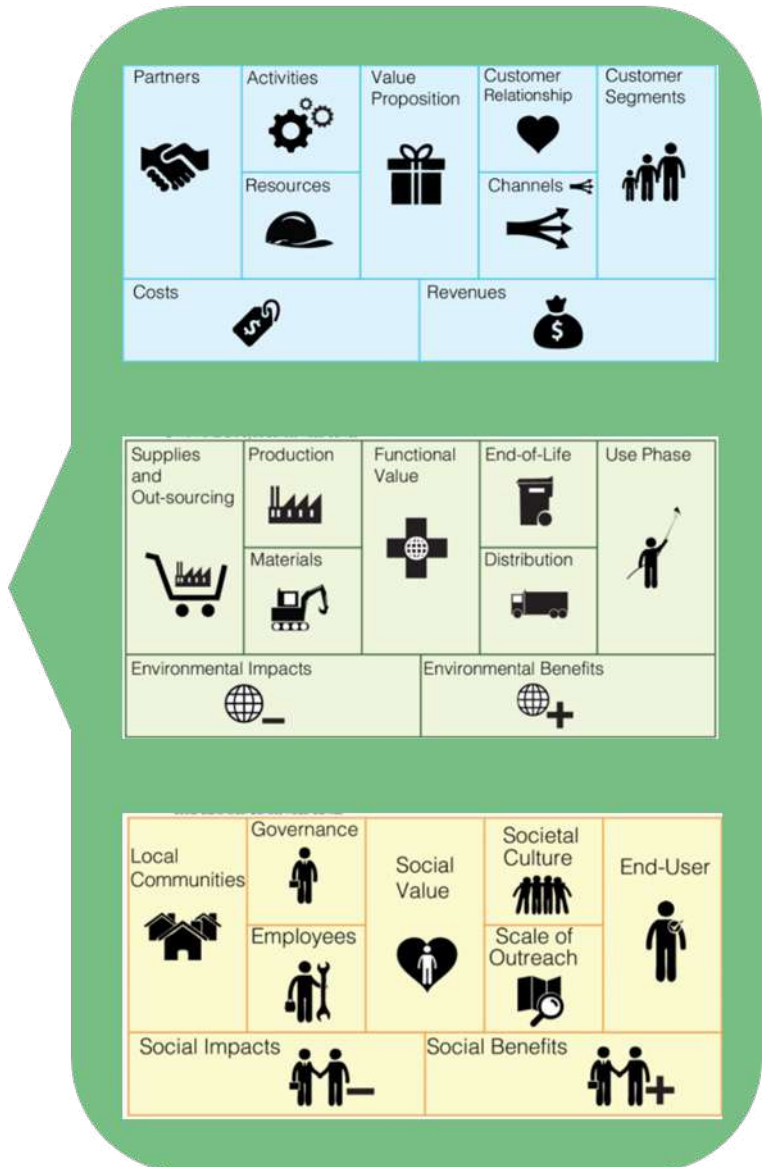


They are ideal vehicles to align local SMEs, SEOs, citizens' initiatives, LRAs and research to help the digital and sustainable transition of a local and proximity economy.

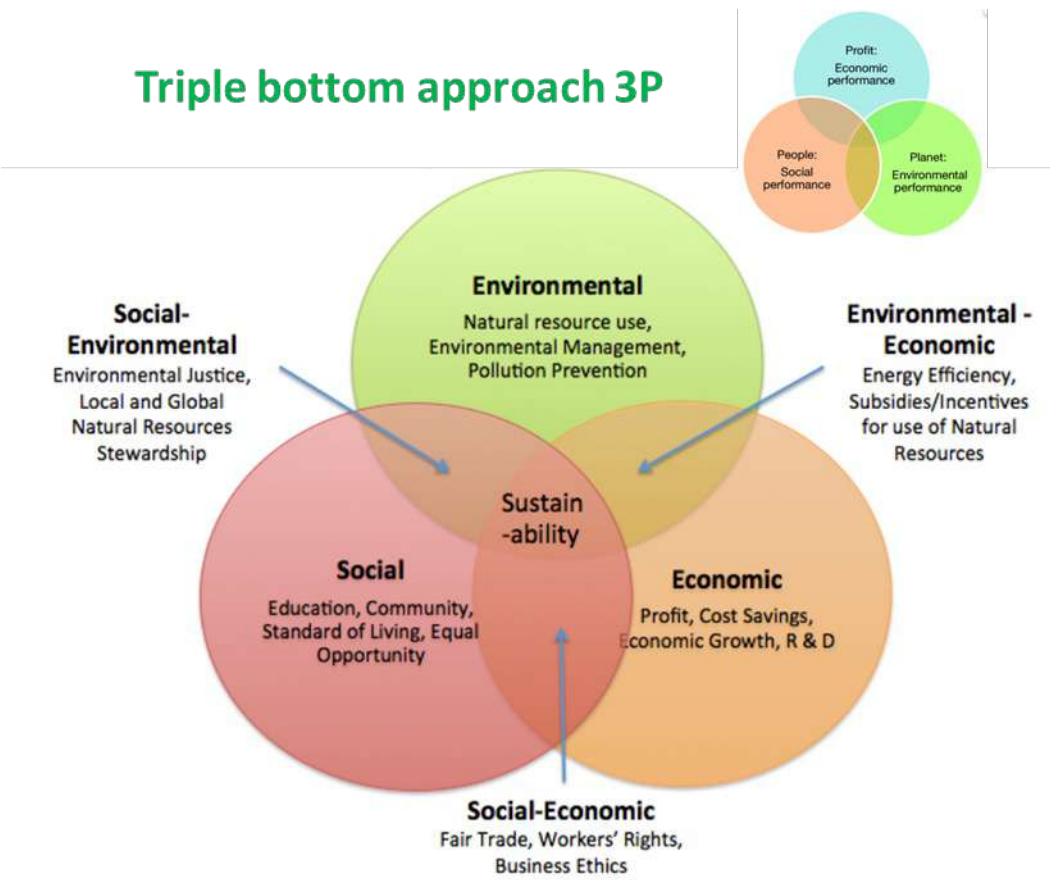
CLUSTER and CSEL: Evolution of Business Model



Triple-layer Model



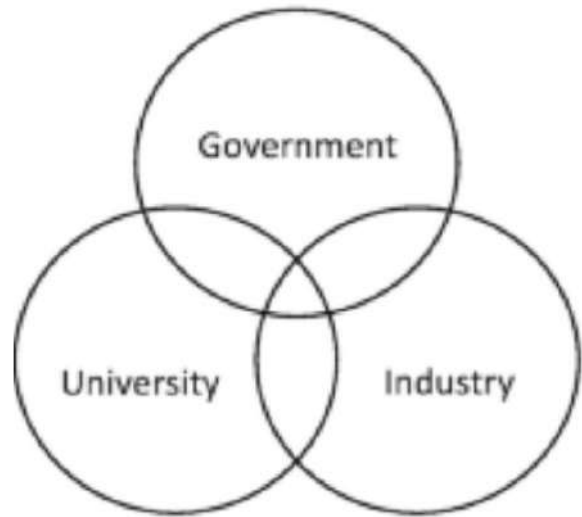
Triple bottom approach 3P



ESG
Environmental, Social,
Governance.
SUSTAINABILITY in a
business context.

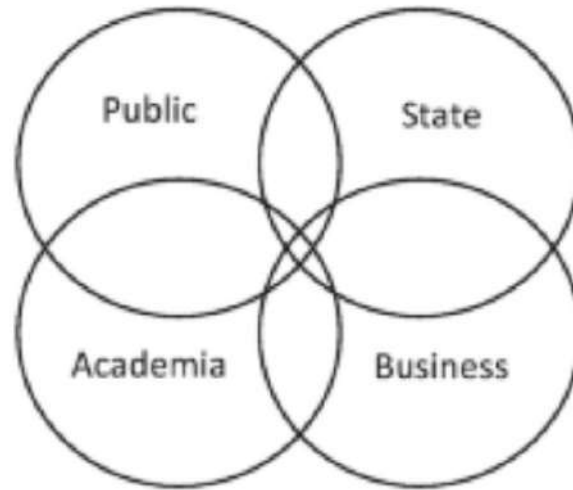


CLUSTER and CSEI: Evolution of the Innovation Model GOALS



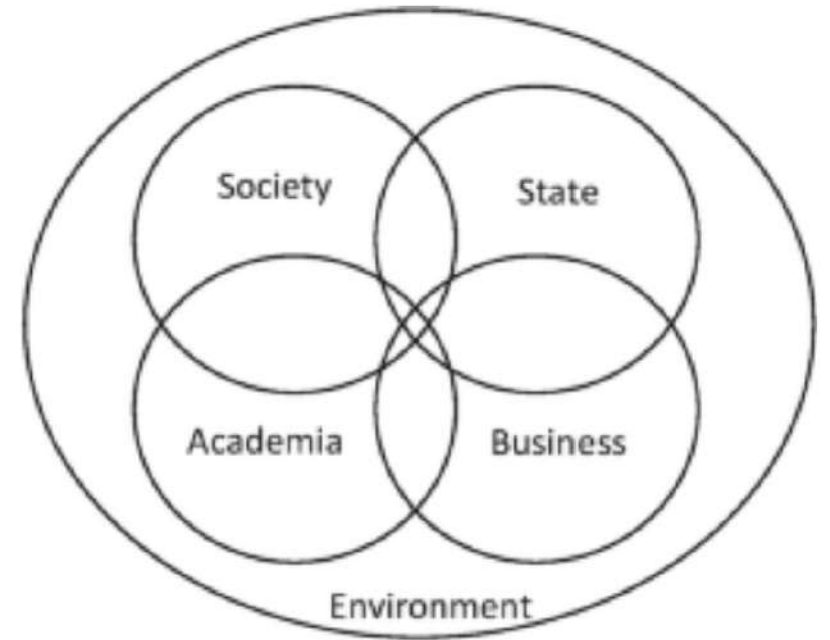
Triple helix

Aimed at emphasising the role of universities and governments in knowledge production and innovation processes, alongside businesses and industry.



Quadruple helix

In advanced knowledge-based societies the inclusion of citizens and civil society is necessary for innovation power and economic considerations, on the one hand, and democratic legitimisation and an ecosystem of trust on the other hand.



Quintuple helix

To account for non-human actors and more-than-human concerns, a fifth helix is added that encourages inter-species thinking, transdisciplinary application of interdisciplinary knowledge and multi-species justice.

CLUSTER and CSEL: EU Strategy and Support



EUROPEAN CLUSTER COLLABORATION PLATFORM



Scale up: Meta-Clusters and Meta-CSEI





Thank you !

For more information

grainsproject@diesis.coop

<https://www.diesis.coop/grains/>



Co-funded by
the European Union